

Frimley Health and Care



Creating Healthier Communities – engaging on our Long Term Strategy

[Pack 2]





Creating Healthier Communities

Frimley Health and Care first developed a 5-year strategy in 2016. Since then, partners from across health and local government have been working together, with local communities to improve the health and wellbeing of individuals, and are using their collective resources more flexibly as part of a commitment to achieve the best possible value from every 'Frimley pound'.

Considerable progress has been made implementing the strategy, and Frimley Health and Care is considered one of the leading Integrated Care Systems.

The partners in the Frimley system wish to develop a 5-year strategy for the Integrated Care System, during 2019. This is an opportunity to refresh our ambition for the system, determine the priorities on which we will focus our collective energy, and make sure the way we work together will enable us to deliver those priorities.

A Long-Term Plan for the NHS was published in January 2019 and publication of a long term national strategy for social care is eagerly anticipated. These will provide important reference points for the strategy, and all systems will be required to develop and agree a five year strategy by Autumn 2019.





Creating Healthier Communities

- We want to share our planning process with Frimley Health and Care organisations, staff, stakeholders and local communities
- To do this, we will provide regular updates to support these messages to be shared widely
- The updates will include key milestones, updates on progress made and any challenges
- We will be inviting opportunities for discussion via email and encouraging feedback from you and how you can play a part





How we will build the strategy:

Working collaboratively our intention is that the Frimley Health and Care system 5-year strategy will:

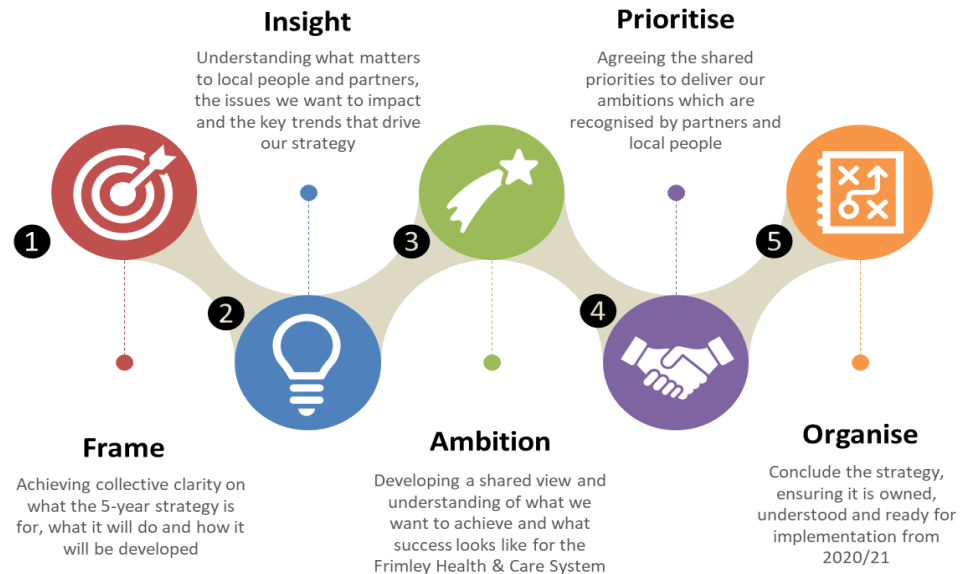
1. Be developed through high levels of engagement with our workforce and local communities
2. Reflect local needs, issues and priorities so that it is meaningful for our system and addresses the issues that matter here, as well as delivering national priorities
3. Is ambitious for our population and system, reflecting our shared desire to focus on what matters most to people - outcomes, quality and performance
4. Tackles the wider determinants of health and wellbeing for our population, supporting local people to remain as healthy, active, independent and happy as possible, and ensuring they receive joined up care and support.
5. Is rooted in evidence, so that decisions are made based on what our local communities tell us, alongside good data and intelligence about need, trends and inequalities.





Building our ambition:

To develop a collaborative, shared view and understanding of what we want to achieve and what success looks like, we want to pull together our insight of what we already know and work together to develop a strategy that will create healthier communities across Frimley Health and Care.

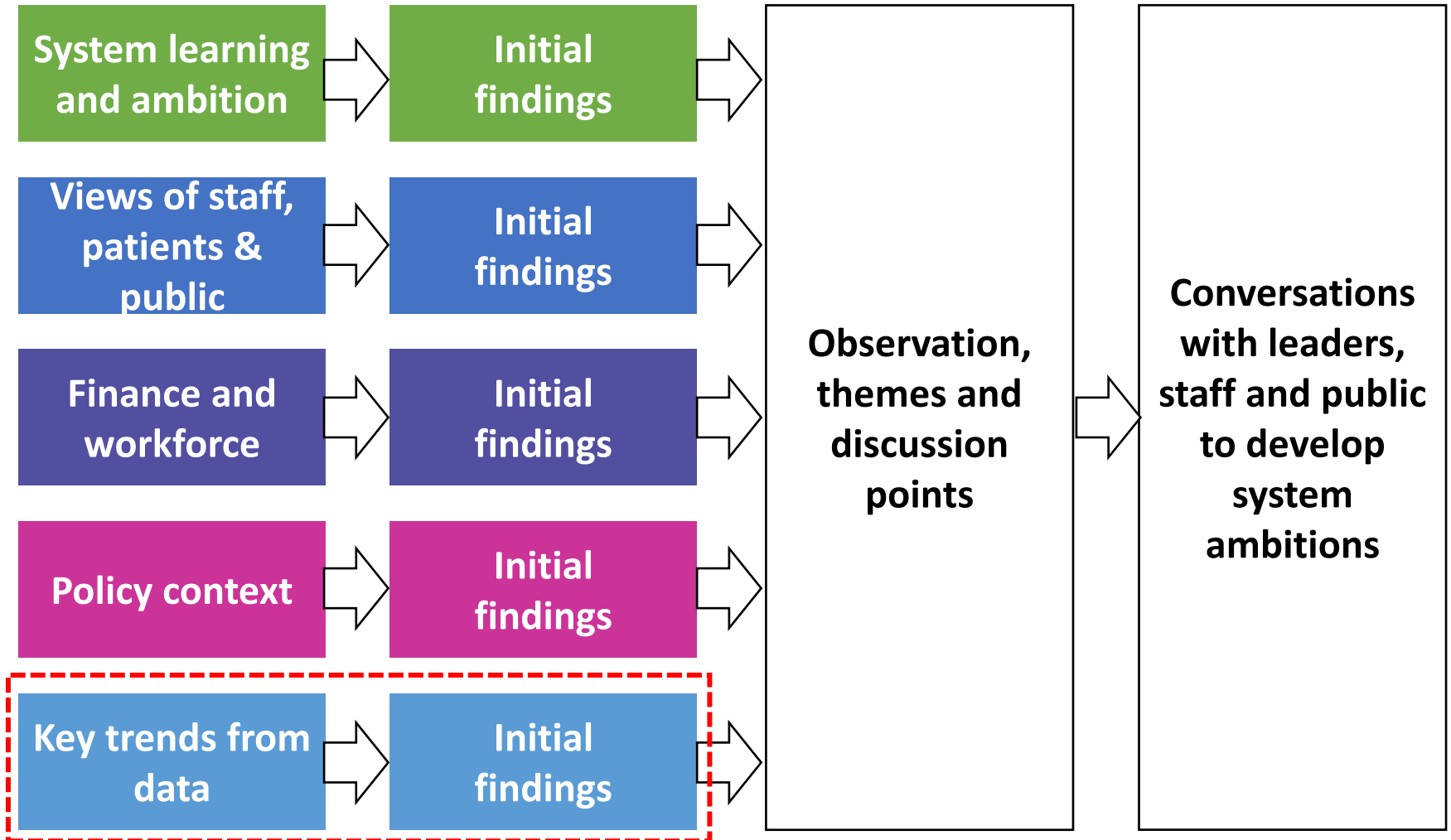


We will work with our partners and work with our stakeholders and local communities to:

- **Review and test what we already know** – our insight; system and local Performance, public health data and engagement activity results
- **Share and provide information on how what we have achieved so far and what has been more challenging to deliver as a system**
- **Collectively develop our ambition** – discuss, debate and agree where we want to focus our energy, our resources, our workforce and our Frimley pound. This includes what local communities can do to create healthier communities.



Insights generated from multiple sources





Creating Healthier Communities

To develop our shared ambition we will undertake a series of engagement opportunities based on making best use of our existing systems and building new ways for people to be involved in co-designing our strategy for the future.

All partner organisations have established approaches to working together with their local communities, clinical membership (practices), partners, health service providers, local authority partners and members the voluntary sector. We are committed to bringing together these approaches to **build on the relationships developed to date, and where it makes sense, to create new, dynamic ways of working with our stakeholders as a broader health and care system.**

We have developed **an ICS events calendar** which identifies all key ICS meetings and events. This includes strategic meetings, clinical meetings and key stakeholder meetings and forums, across health, care and local voluntary sector organisations – this will provide a mapped series of opportunities to share messages, build a consistent dialogue around our planning and engagement plans.





Healthwatch-led Community engagement

Healthwatch England have been awarded funding by NHS England to carry out local engagement with the public to support the NHS's new 10 year plan and develop our Long Term strategy. We have been working together with our local Healthwatch organisations to develop an engagement plan which includes a range of activities including surveys, focus groups and events.

Each Healthwatch has received a grant, with one Healthwatch per area being nominated as a coordinator. For us, this is Bracknell Forest/WAM Healthwatch – who receive a further grant to support this role.

We are asking for your support to help share this opportunity to shape the future of our local health and care system. The survey is open until 14 June 2019..

The survey is available online and paper copies are also available on request or to download from the Frimley Health and Care website with supporting information (including easy read survey).

www.frimleyhealthandcare.org.uk/get-involved





Creating healthier communities timeline

	APRIL	MAY	JUNE	JULY	AUG	SEPT	OCT
Mapping our stakeholders	Complete	Review and discuss					
Mapping engagement events	Underway	Complete and plan	Share messaging and disseminate engagement messages				
Community engagement	Planning	Survey	Analysis and report				
Insight phase	Analyse		Present				
Workforce and stakeholder engagement		Engagement and planning using insight – to develop the ambition and priorities					
Develop our strategy					Strategy development		
Develop our community 'deal'							Oct – Mar 2020



What's next?

- Continue to validate / refine the dashboard and our insight
- Crystallise key trends / themes to inform our strategy, setting ourselves up to convert analysis into insight to drive decisions
- Healthwatch survey with our local community up until 14 June
- Start engagement across stakeholders, through events, forums and meetings that already exist through May and June
- Develop the next phase of the collaborative strategy development approach – our 'inspiration station'

If you have any questions about the contents of this pack or any comments on how we could improve it please contact:

georgia.henkun1@nhs.net

And we will get back to you as soon as possible.

